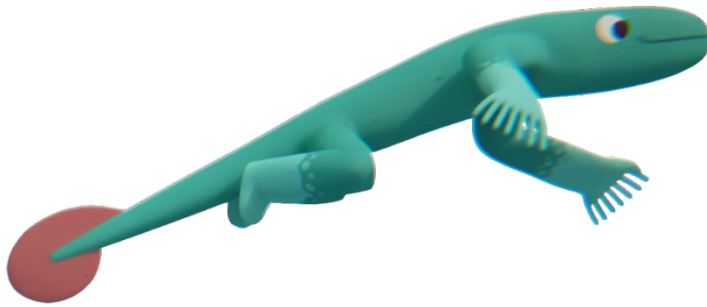


BIG LIZARD



Big Lizard is
based on a
prehistoric
ACANTHOSTEGA

1

Acanthostega lived about 365 MILLION YEARS AGO, in what we call the DEVONIAN PERIOD.

2

Acanthostega were only about 60cm long (though our Big Lizard is the size of a human adult).

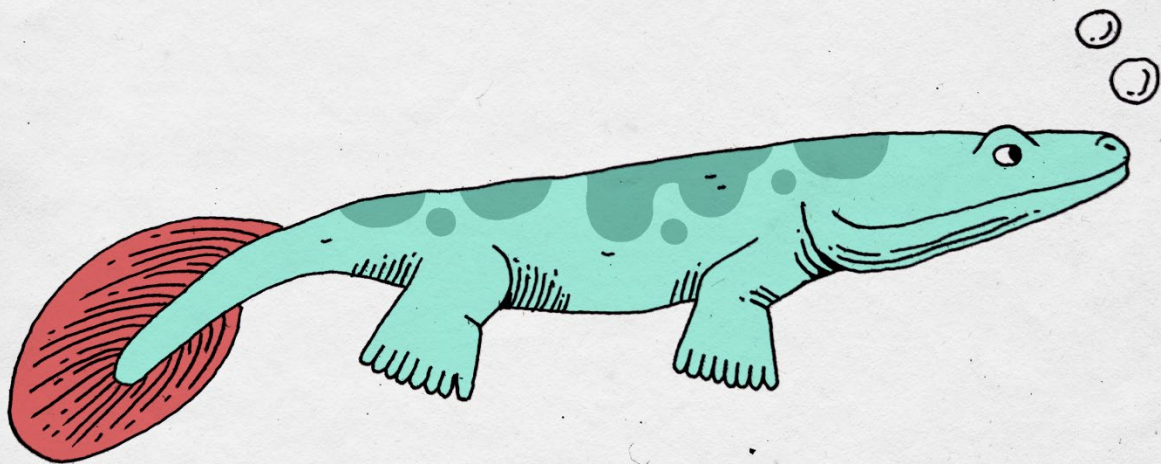


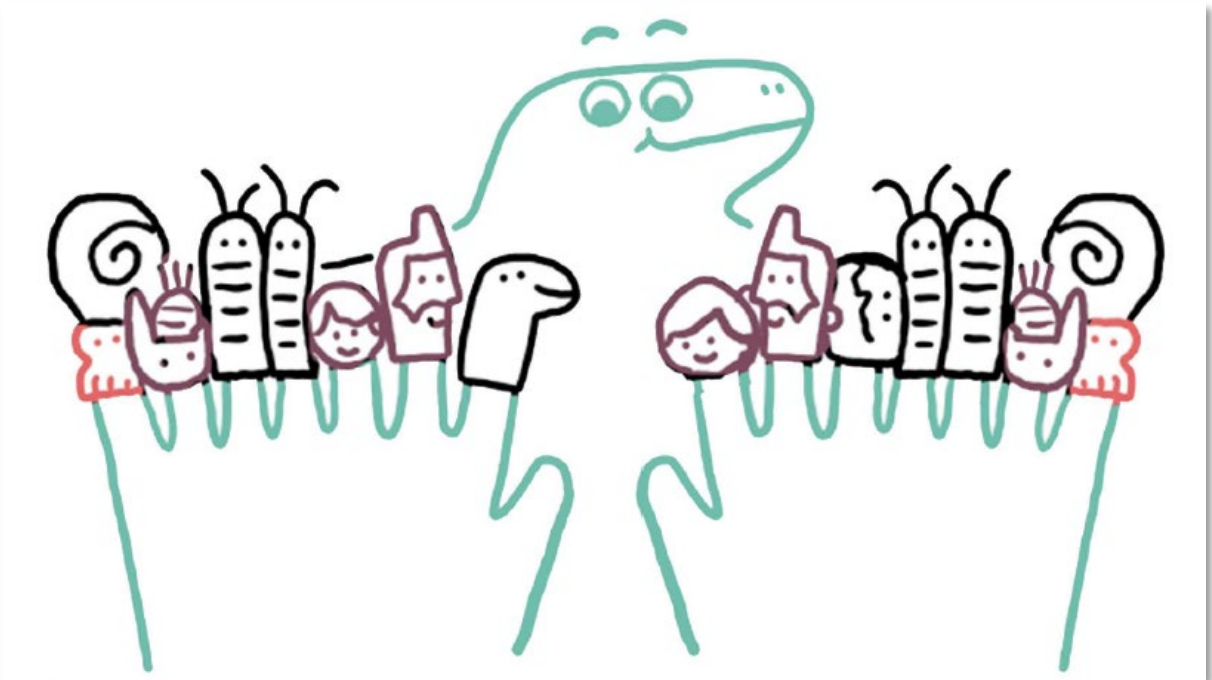
fig. 1 ___ Acanthostega

3

They were one of the first animals to have **RECOGNISABLE LIMBS** (arms and legs) that could support its journey from the sea to land.

4

In fact, acanthostega had **EIGHT 'DIGITS'** (fingers) on each hand (or foot)!



Acanthostega had **GILLS**, like a fish, inside it's body.

But it also had **LUNGS**, like us!

5

6

Perhaps prehistoric acanthostega couldn't really survive on land because its RIBS were too short, and because it didn't have WRISTS, which would have made walking very hard!

7

But it did have two large FANGS, which suggests it would have fed on animals that lived at the edge of water and land, unlike a fish.

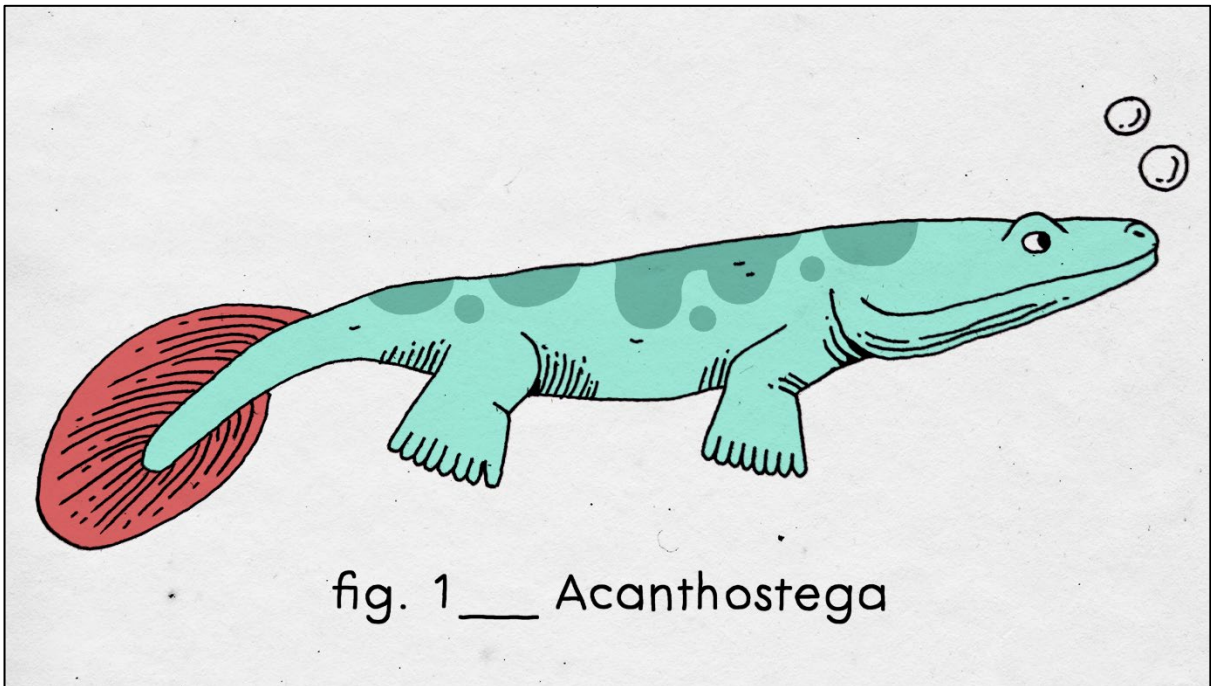
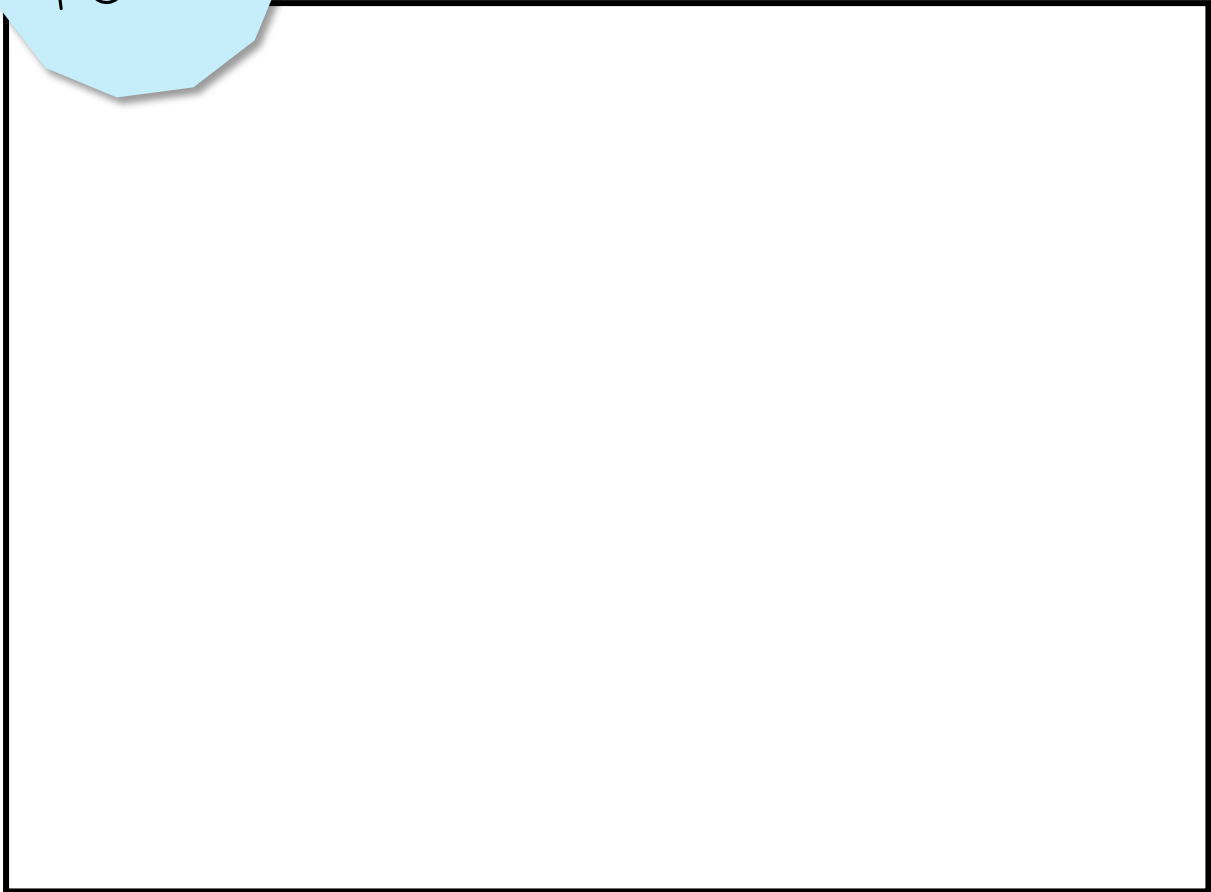
8

Jennifer Clack discovered one of the best acanthostega fossils in Greenland in 1987.



YOUR
TURN!

Can you draw an acanthostega?





1	What prehistoric creature is Big Lizard?	
2	How many 'digits' does an acanthostega have on each hand?	
3	How many million years ago did acanthostega live?	
4	What do we call that period of time?	
5	Can you remember why acanthostega probably didn't walk about on land?	
6	What does acanthostega have in their mouth that would help it eat prey?	
7	Where did Jennifer Clack find an acathostega fossil?	

Quiz Time Answers:

- 1) Acanthostega 2) 8 3) 365 4) Devonian
5) Ribs too short, didn't have wrists 6) Fangs
7) Greenland

Thank you for downloading this Big Lizard worksheet

Please check back to biglizardtv.com/learn for more, and send us a message on social media to let us know how you got on!



Instagram [@biglizardtv](https://www.instagram.com/biglizardtv)



Facebook [@biglizardtv](https://www.facebook.com/biglizardtv)



TikTok [@biglizardtv](https://www.tiktok.com/@biglizardtv)

Cosmic!

